



# DRAMA

## Year 8 Performing Arts – Term 3

# MUSIC

What are the script conventions and why are they there?

Key Term	Definition
<b>Stage Directions (S&amp;C)</b>	Directions to the actor that are <u>written in italics</u> . They tell the actor the <u>location</u> of the scene and when the actor <u>exits and enters</u> the stage. Stage directions in brackets tell the actor how to <u>move and speak</u> .
<b>Layout</b>	Character names are written to the left of the page with the lines next to them. If there is a narrator, they will be named as 'Narrator'. You DO NOT narrate the stage directions
<b>Characters</b>	A character list appears at the beginning of the script. In most cases it tells you the character's name and age. Sometimes it will tell you the relationships of the characters.
<b>Using a Script</b>	You must <u>read the whole script</u> before you start working on it so you understand your character and the storyline as a whole. You must always <u>learn lines</u> to help you perform a scripted piece well, as you can focus on the character and movements on stage rather than the lines. You must not hold your script in front of your face when performing.

Remember these line learning techniques to help you with script work:

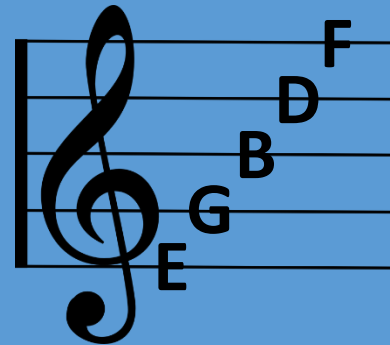
Parrot Fashion	Repeat lines over and over again until you remember them, then move onto the next line and repeat the process.
Run-Through	Save time for lots of run-throughs of the work during rehearsals so that you can learn the lines as you rehearse.
Test	Have a partner test you on larger chunks of lines. They can look at the script to check you have got them right.

This is a treble clef



This is time signature – It tells us how many beats are in a bar.

Notes on the lines:



Notes in the gaps:



**Note Values:**

Note	Note name	Value
	Semibreve	4 beats
	Minim	2 beats
	Crotchet	1 beat
	Quaver	½ beat
	Semiquaver	¼ beat



# DRAMA

## Year 8 Performing Arts – Term 3

# MUSIC

### Questions

- |    |  |
|----|--|
| 1. | What is stage direction? Can you name the different stage directions?                  |
| 2. | What Layout should you use?  |
| 3. | What is a character list and where is it?  |
| 4. | How do you use a scrip? Can you give some pointers on how you could use it to perform. |

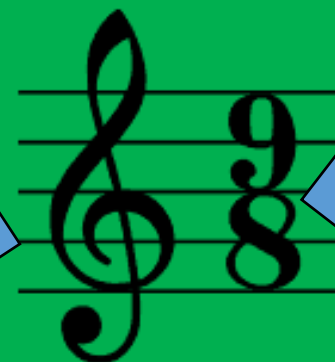
Remember these line learning techniques to help you with script work: Fill in the definitions.

Parrot  
Fashion

Run-Through

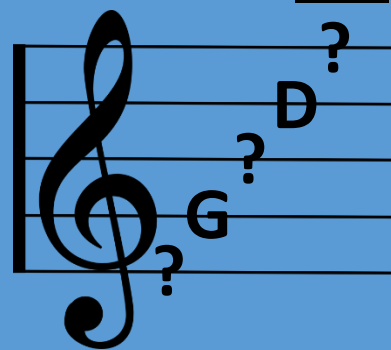
Test

This is a?

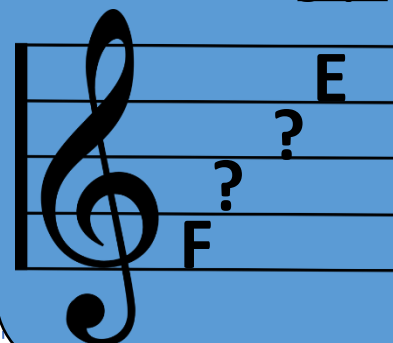


This is time signature – what does it tell us?






Notes on the lines:



Notes in the gaps:



**Note Values: Fill in the gaps**

Note	Note name	Value
	Semibreve	beats
	?	2 beats
	Crotchet	? beat
	?	½ beat
	Semiquaver	? beat